



# Innovative Labeling Solutions

# Model TSC-1708

## NEMA 4X (IP65) Stainless Steel Controller With 17" Industrial Resistive LCD Touch Screen

### Computer Specification:

- Open architecture PC-based ATX Motherboard
- Current generation AMD / Intel Processor
- 1 GB Memory
- 80 GB Hard Drive
- DVD Optical Drive
- USB, RS232, LAN
- PCI Expansion Slots
- On Board Video
- 24 Vdc @ 2amps Power Supply
- Windows Operating System
- Unique Fan Cooling System

### Optional:

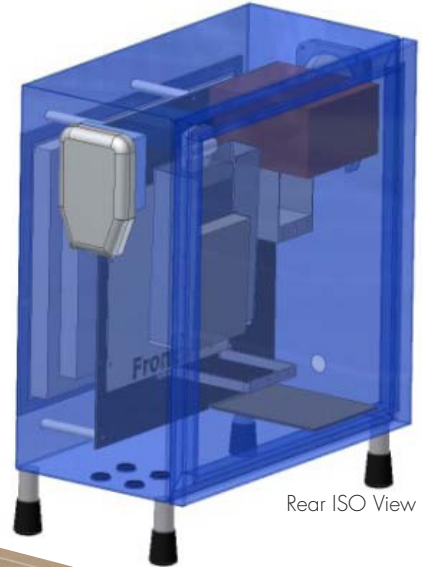
- Memory Expandable to 4GB
- I/O USB Controlled 8 Digital Optoisolated input, 8 SPDT Relay output
- I-Solutions Software
- Label Matrix Software
- Floor Stand

### Touch Screen Monitor Specification:

- 17" Panel Mounted Industrial Monitor
- NEMA 4X Stainless Steel Bezel
- Resistive Touch Screen
- 1280 x1024 Resolution
- Long Life Back Lights
- High Brightness, High Contrast
- Tempered Glass Anti-reflective Window
- High Shock and Vibration Specs
- Viewing Angle (Horizontal/Vertical) – 170 Deg / 155 Deg Typical
- Brightness-300 Nits
- Supported video standard VGA, SVGA, XGA, XSGA
- Response Rate – 8 ms
- High Reliability
- 3 Year Factory Warranty
- MTBF Greater Than 250,000 Hours
- UL Certified



Industrial LCD Touch Screen



Rear ISO View



Front View

Phone: +1 386.418.8880

Fax: +1 386.418.4221

E-mail: sales@imisolutions.com

imisolutions.com