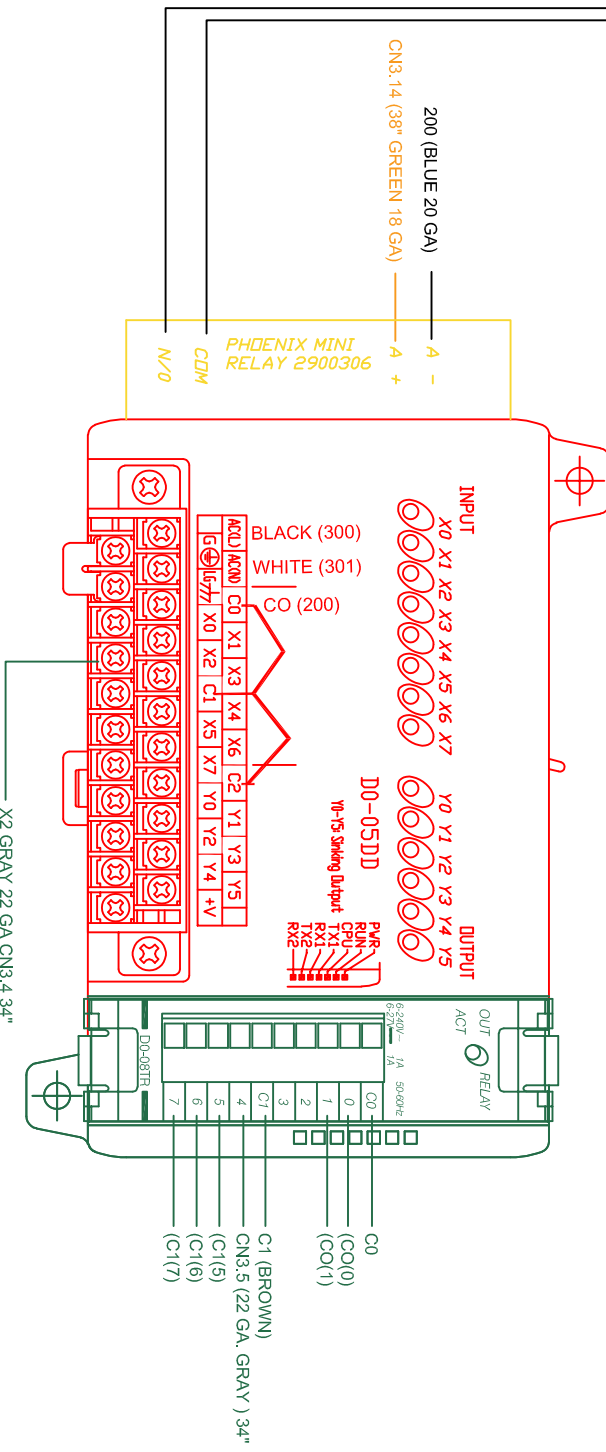


PIN	DESCRIPTION	LABEL
1	110VAC INPUT (7.0 AMPS)	CN3.1
2	110VAC INPUT	CN3.2
3	110VAC GND INPUT	CN3.3
4	HEIGHT INHIBIT INPUT (PNP)	CN3.4
5	RUN OFFLINE OUTPUT (PNP)	CN3.5
6		CN3.6
7		CN3.7
8		CN3.8
9	MACHINE ERROR OUTPUT (PNP)	CN3.9
10	LABEL LOW OUTPUT (PNP)	CN3.10
11	LABEL DETECT ON APPLICATOR OUTPUT (PNP)	CN3.11
12		CN3.12
13		CN3.13
14	ALARM GREEN LIGHT INPUT (PNP)	CN3.14
15	ALARM RED LIGHT INPUT (PNP)	CN3.15
16	ACTUATOR HOME OUTPUT (PNP)	CN3.16

PLC COLORS	PLC I/O REF
ALL X'S ARE BROWN	X0- PACKAGE P/E
CO- YELLOW	X1- RETRACT INHIBIT
CO/0- GRAY	X2- HEIGHT INHIBIT
C1- BROWN	X3- LABEL ON HEAD SENSOR
C1(5) ORANGE	X4- END PRINT
C1(6) ORANGE	X5- APPLY (VENDOR)
C1(7) ORANGE	X6-SATO ERROR
Y0- BLUE	X7- RFID TAG ERROR
Y1- BLUE	Y0- EXTEND VALVE
Y3- BLUE	Y1- BLOW VALVE
PLC Y+ - BROWN	Y2- N/A
	Y3- ACT RETURN VALVE
	Y4- N/A
	Y5- N/A
	Y100- PRINT START
	Y104- ONLINE
	Y105- VACUUM
	Y106 - RED LIGHT
	Y107 - GREEN LIGHT



**PLC RUN X2 TO PLC BUT DO NOT CONNECT AND COVER THE END WITH A PC OF SHRINK TUBE**

TITLE: <b>UNIPRINT121 EXTEND BLOW SSLAW WIRING</b>	
DRAWN BY: <b>SP</b>	DATE: <b>3/28/2024</b>
CHECKED BY: <b>NA</b>	DATE: <b>3/28/2024</b>
REV: <b>1</b>	SCALE: <b>NTS</b>
FILE NAME: <b>UNIPRINT121 EB SSLAW2</b>	DWG NUMBER: <b>UNIPRINT121 EB SSLAW2</b>

**Innovative Machine, Inc.**  
386.418.8880 :TEL  
www.innmac.com

**NOTICE:** THE DRAWING AND SPECIFICATIONS CONTAINED HEREIN ARE THE CONFIDENTIAL AND PROPRIETARY DATA OF INNOVATIVE MACHINE, INC. AND SHALL NOT BE DUPLICATED, DISTRIBUTED OR DISCLOSED. IN WHOLE OR PART, OWNER PROVIDED DRAWINGS ARE FOR THE CONVENIENCE OF CONTRACTORS FOR INFORMATION PURPOSES ONLY AND DO NOT CONSTITUTE A REPRESENTATION OR WARRANTY OF THE ACTUAL CONDITIONS AT THE SITE OR WITHIN THE PROPOSED OR EXISTING STRUCTURE. CONTRACTOR IS SOLELY RESPONSIBLE FOR THE ACCURACY OF ALL DRAWINGS AND OWNER SHALL NOT BE RESPONSIBLE FOR ANY VARIANCE BETWEEN PROVIDED DRAWINGS AND ACTUAL CONDITIONS.